



## Block Guide Pin Inspection

### Issue

The block guide pin can fall if the retaining bolt becomes loose or damaged. The block guide pins (Canrig P/N DT11880) secures the block guide frame to the traveling block.

Refer to the block-guide assembly BOM and drawing in the top drive manual to identify the location and quantity of the block guide pins.



Figure 1: Block Guide Pin (Canrig P/N DT11880)

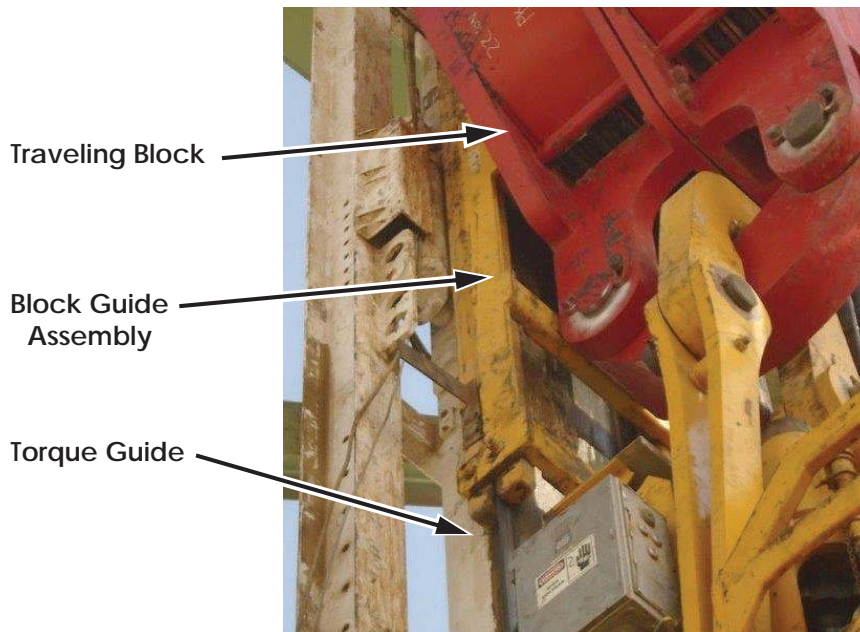


Figure 2: Traveling Block and Block Guide Assembly

Model: 1050E/8050AC/1250AC/ 1275AC	Nov. 21, 2017
Serial #: See below	
<b>Alert</b>	

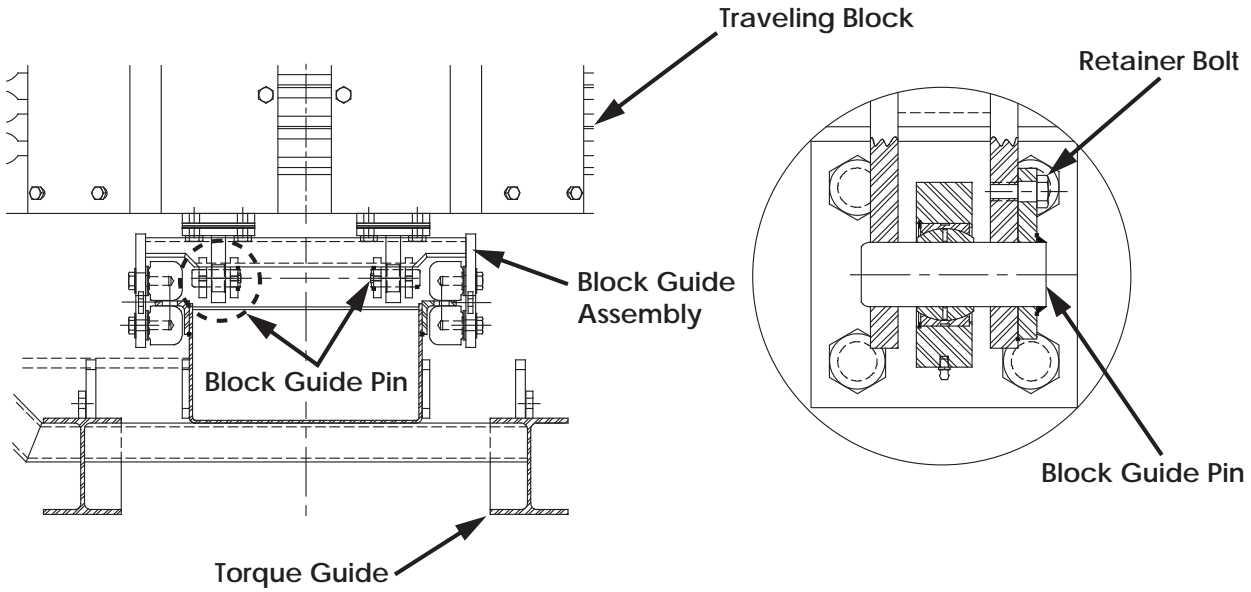


Figure 3: Block Guide Pin Location

## Affected Top Drive Serial Numbers

See Table 1 for affected top drive serial numbers:

**Table 1: Affected Top Drive Serial Numbers**

Serial Number	
33	645
503	714
512	918
626	947
638	956
639	982
641	1271



Model: 1050E/8050AC/1250AC/ 1275AC	Nov. 21, 2017
Serial #: See below	
Alert	

## Recommendation

- Check the retaining bolt (Canrig P/N HH-0500NC-0125-GR8-W) to ensure it is not loose or damaged.
- Ensure retainer bolt is installed with Nord-lock washer (LW-0500-NL) and secondary retention (1/16" wire rope, Canrig P/N M21-2000-010).
- If the wire rope is damaged or retainer bolt is loose, inspect bolt for thread damage or cracks. Replace worn or damaged bolts with new bolts (Canrig P/N HH-0500NC-0125-GR8-W.) Use Nord-lock washer (Canrig P/N LW-0500-NL) and Loctite® 242. Torque bolts to 99 ft-lb.
- Secure the retaining bolt with secondary retention wire rope.

The retaining bolt should be checked as part of the daily drop prevention inspection. Refer to the section 4B of the top drive manual for recommended top drive inspection schedule.

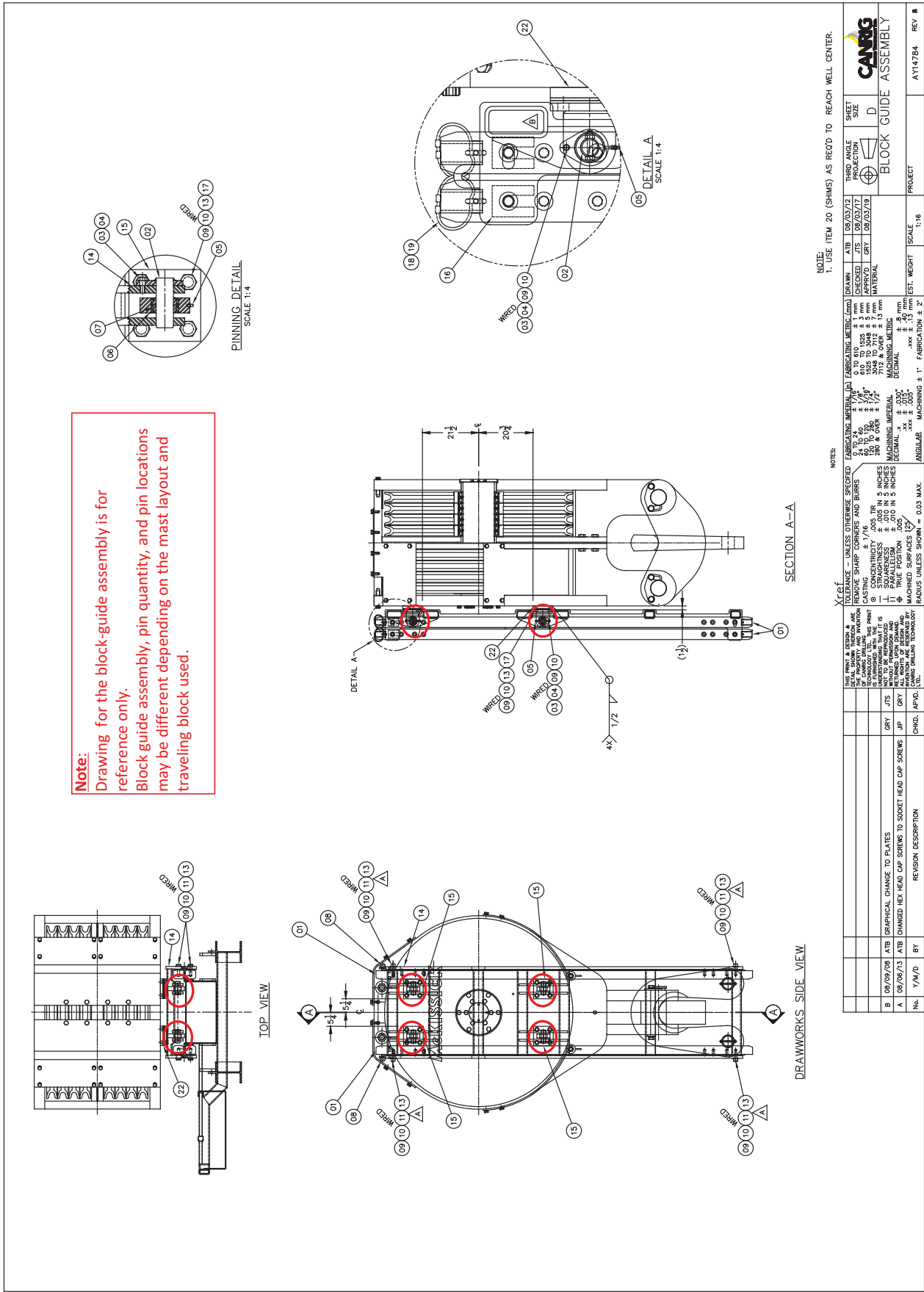


Figure 4: Block Guide Assembly Drawing AY14784 - For Reference Only